

## RISE – RESPONSE IN SYRIA EMERGENCY

### REPORT 2 – PERIOD FROM 01/03/2023 TO 31/08/2023

#### 1. Context description

The earthquake with a magnitude of 7.8 degrees that hit Turkey and Syria on 6 February 2023 has caused thousands of deaths, a great number of injured people, and displacement. According to an important report issued by OCHA, around 9 million people in Syria have been affected by the earthquake.

The earthquake in Syria and its disaster must be analyzed considering a larger context which is related of 12 years of war and the high poverty level people



are facing and the lacking of basic services like fuel, electricity power, and gas. Moreover, we should not forget that the earthquake hit Syria at the same time that the country is still suffering from the enormous effects caused by the pandemic and other international crises.

Faced with this scenario, we can imagine the suffering of the Syrian people...

But happily, closeness and solidarity came from all over the world bringing hope for the Syrian people.



The Focolare Movement international also responded to the call to support the neediest people and assist morally and psychologically those affected by the earthquake, in collaboration with AMU, AFN, and other organizations, **RISE (Response in Syria Emergency) Program was launched** to respond to this serious emergency situation in the cities most affected by the earthquake such as Aleppo, Lattakia and Hama. RISE Program works on various fields: basic needs aid, Medical Assistance, housing relief and psychological support.

In addition to the damage caused by the earthquake in the last two months (July and August 2023), the economic situation in Syria worsened. Hunger, poverty, lack of medical care... make life even more difficult and people are losing hope for the future.

For this reason, the services offered by RISE PROGRAMME become essential to allow people to live with dignity and be relieved of the stress situations.

## 2. Outcomes of period 01/03/2023 to 31/08/2023

### *2.1. Emergency response - community participation*

At first, immediately after the earthquake, through the collaboration of many young volunteers and local organizations, we were able to provide basic needs for people who were in shelters, and also for the elderly who could not leave their homes due to health issues.

Meals, hygiene products, clothes were distributed.

The basic needs distribution activities were 20 and helped more than 2500 people.



Descriptions of some of the activities:

### Meals distribution

Meals were distributed for 260 people who were in the shelter of Al-Zebedeya district.



### Meals Delivery for Elderly

During a period of 2 months, every day 35 meals were delivered to the elderly who could not leave their home for health reasons.



### Access to hygiene services

After weeks of people being in shelters, giving access to hygiene services has become a priority to maintain health and prevent diseases. In collaboration with other associations, we were able to give access to hygiene services (e.g. take a shower) for 544 people.





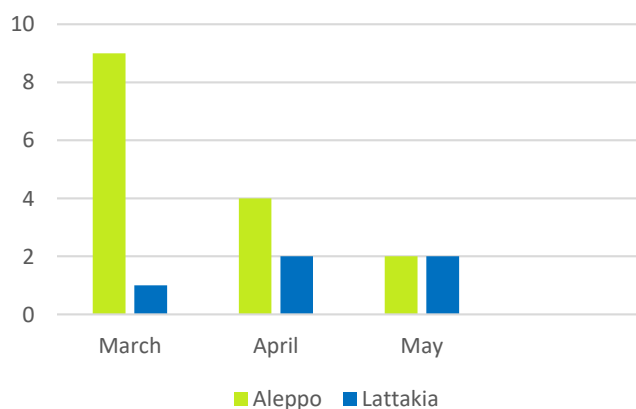
### Hygiene products distribution

Hygiene products were distributed to 150 beneficiaries who were in a shelter.

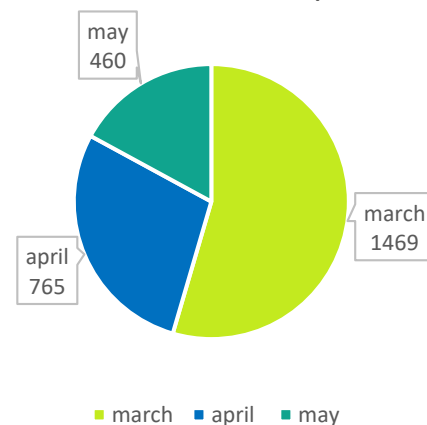


This activity had very positive results, it was expected with this activity to respond to the needs of 600 people, but through the participation of various volunteers and collaboration with other associations, we supported 2694 beneficiaries.

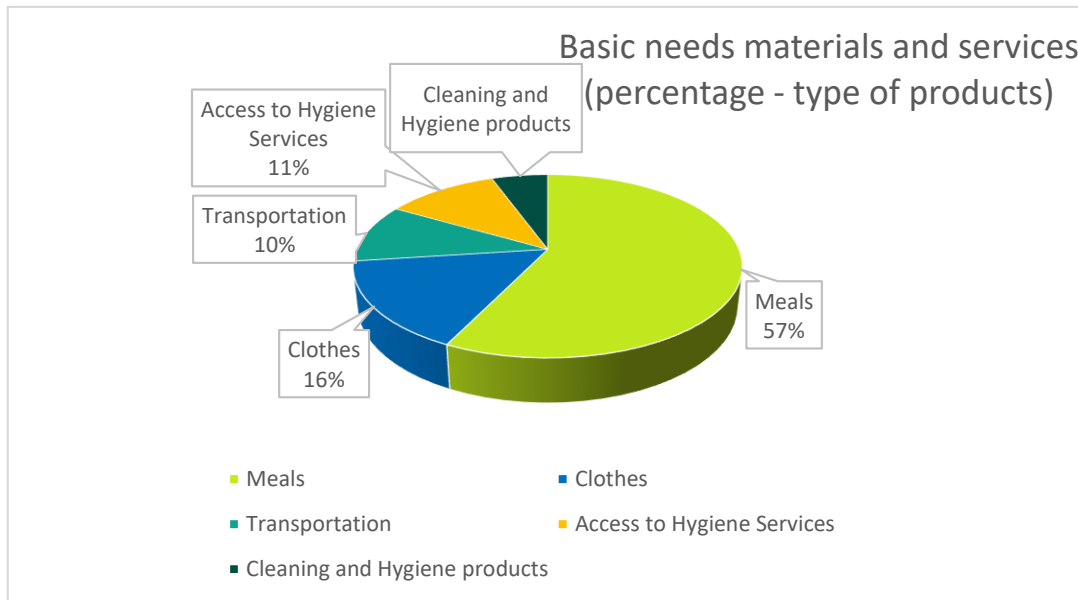
Number of activities  
(per month)



AB 1 - EMERGENCY RESPONSE  
(number of beneficiaries per month)

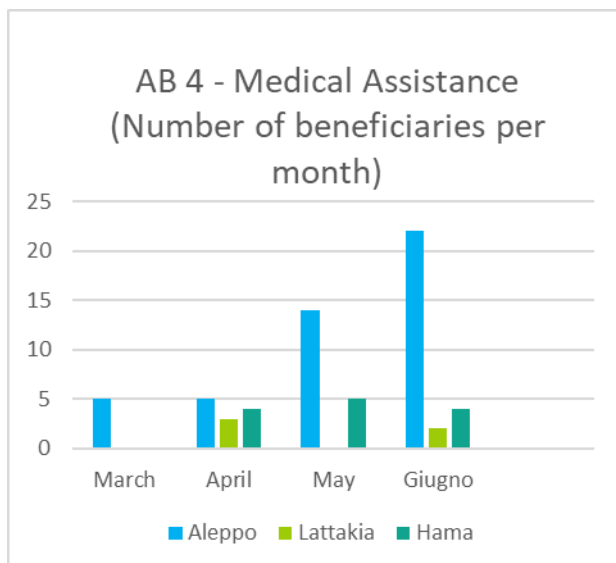


This activity has concretely supported the neediest through basic need materials, as well as through services that contributed to maintain the physical and mental health of adults and children.



From 01 March 2023 to 31/08/2023, as described above, to meet the needs after the earthquake, the RISE PROGRAMME offered support in various fields.

## 2.2. Medical Assistance



In 4 months, from 01 March to 31 June, 64 beneficiaries were supported through medical assistance

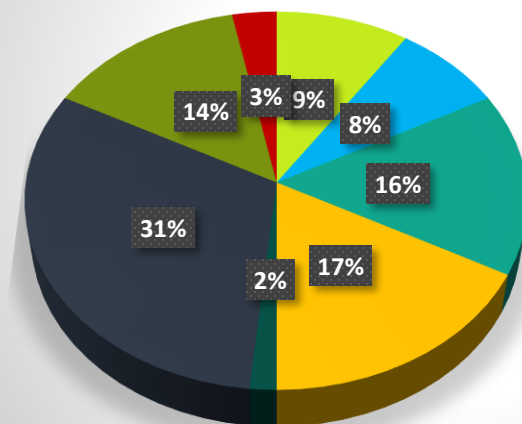
A financial contribution for:

- Post-hospital medical services,
- medicines,
- physical or psychological treatment sessions for those affected physically or psychologically,
- Medical equipment and mobility aids equipment.



## Medical Assistance - Financial contribution (percentage - types of services)

Period: 01/03 to 31/06



- Hospital Services(surgery or interventions)
- Post -Hospital Services (treatments and medical examinations)
- Medicines
- physiotherapy
- Psychoterapy
- Medical equipments and Equipment for mobility aids
- Clinical Analysis
- Special treatments (dialysis...)

## Sharing...



The small N. was born earlier than expected, for this reason she had a lack of oxygen in her brain and had to stay for several days in the incubator.

The costs of hospital services are very high, impossible for a middle or low income family to pay for these expenses.

So the RISE program was able to contribute with a part of the expenses, until the transfer of the baby to the university hospital, where she could continue treatment for free.

Today the little girl is well and happy at home with her parents!!!

Little Samir Nana is 4 years old, and he's a beautiful child! He was born with a mental disability and muscular atrophy that made him unable to walk and move independently, he needs 24-hour assistance.

In these four years, Samir has grown, gained weight, and his mom can no longer lift or move him easily. Without a suitable means of locomotion, Samir was forced to stay at home all time.

His family presented to the Rise Program, the need of little Samir to have a stroller that fits his needs.

And so with the economic support of Rise Program, his mother could buy the suitable stroller! Today the mother can move him easily, take him out for the "sun bath" as indicated for the doctor and he has contact with other people, and this helps him to develop other skills'.



Safaa Abboud is a Syrian Woman. She has physical and mental disabilities. She lived all the years of war always inside her home. Without mean of locomotion it was very difficult to get out. Even after the earthquake the situation has not changed, being always inside home made her obese...

Through the support of the Rise Program, Safaa was finally able to have her wheelchair, which allows her to move more easily in and out of the house.

Safaa is very happy, and thanks for the help that she received. These are her words: " May God bless you. I am very happy to have received the wheelchair. May God reward you well!"

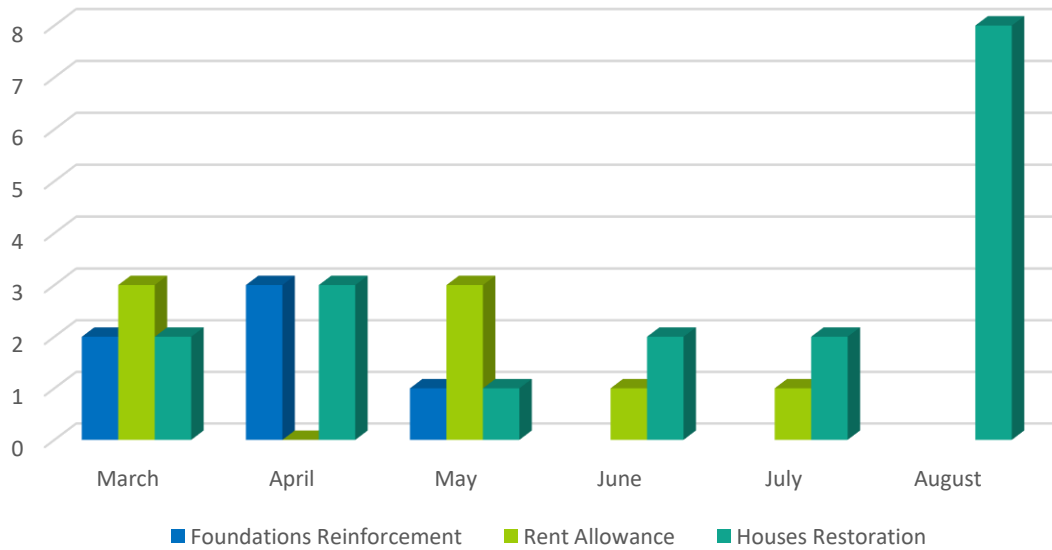


### 2.3. Housing relief

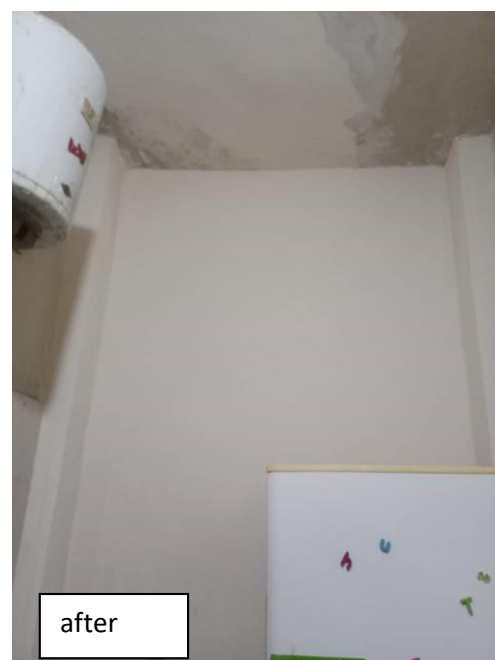
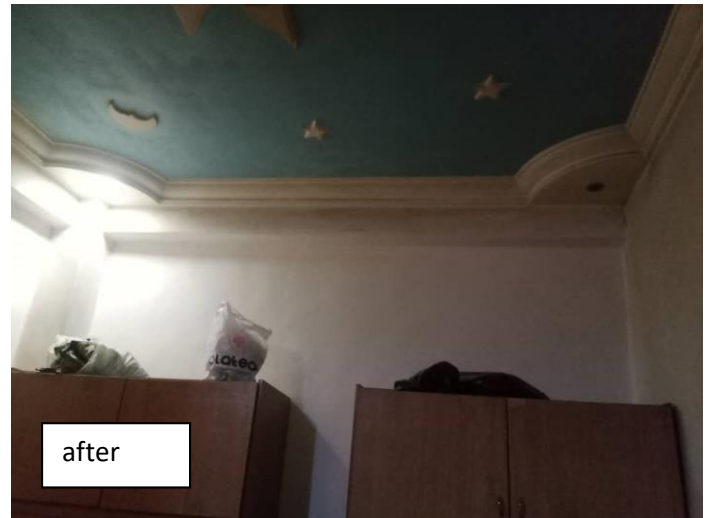
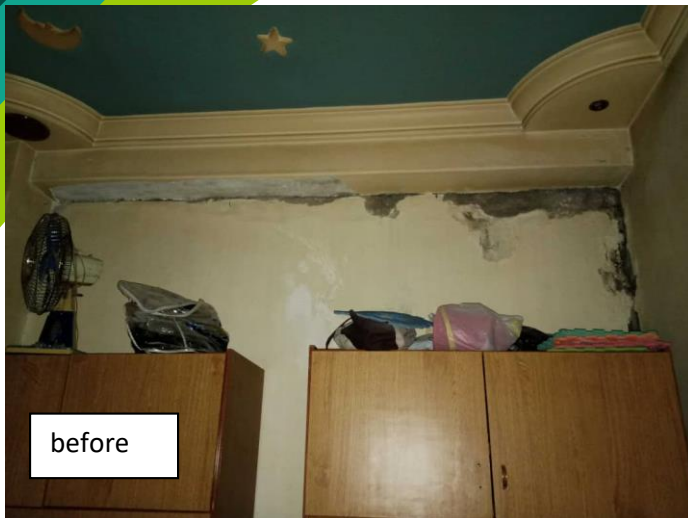
From 01 March to 31 August RISE program collaborated with a Financial Support on the Restoration, Foundations Reinforcement or payment of rent wages for 32 beneficiaries in the city of Aleppo and Lattakia.



Housing Relief (number of beneficiaries per month)



Sharing...



Mrs G.M. lives with her husband and 2 children. They were all at home at the time of the earthquake. The house was badly damaged. But the damage was not only material, also psychological damage was severe, as in the case of her youngest son who for months was afraid and vomited continuously. Returning home reminded him of the difficult moments of the earthquake, especially when he saw the cracked walls. Thus, through the financial support of the Rise Program, the family was able to renovate the most damaged part of the house, and after a few weeks they were able to go back home.






---

*Mr. A.B., he saw the building where he lived with his family collapse in front of his eyes.*

*His wife and two children died in the tragedy.*

*They lost everything.*

*After that, Mr. A.B and his survived children had to find a place to stay.*

*But to rent a house in Aleppo you have to pay a year wages in advance, what is impossible for a middle or low income family.*

*So... through the financial support of the RISE Program, Mr. A.B. was able to rent a house and start a new life.*

---

## 2.4. Psychological Support

The aim of psychosocial support is to give people the "tools" needed to overcome the trauma suffered by the earthquake, with special attention to the elderly. This activity is divided into Caregivers Services, PSS trainings and PSS individual or group sessions.



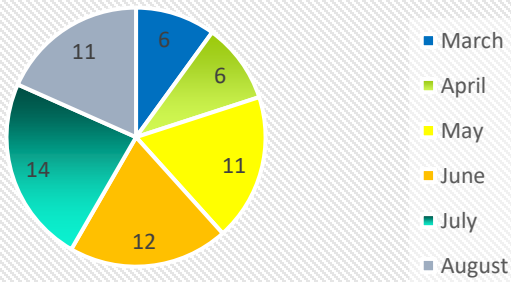
### *Caregiving Services for elderly people in Aleppo*

In a period of 6 months, from 01 March to 31 August the caregivers' services contributed to overcome psychologically, emotionally and morally **20 beneficiaries**. Caregivers offer special services according to the needs of each elderly person. Working hours are also personalized.

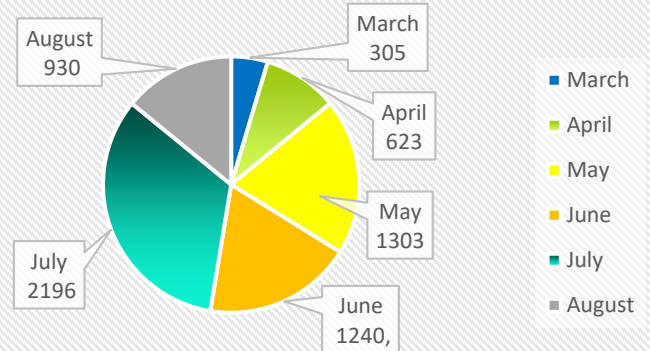




Caregivers Services  
(number of beneficiaries)



Caregivers Services -  
(Number of hours per month)



The activities of PSS trainings and sessions were postponed for October and November and wants to serve 560 people.



## 2.5 EMPOWERING CRAFTSMEN

22 kit tools for tradespersons were distributed  
(blacksmiths, plumbing, carpentry, and electrician professionals)  
Cities: Aleppo + Hama.

**Period of Intervention: 01/March/2023 to 30/June/2023**

After over 10 years of war and demolitions, The earthquake added up to the country destruction. Hundreds of thousands of people had their home partially or totally destroyed.



In front of the eminent needs for reconstructing cities, rebuilding homes, schools etc.. the country was faced with a great lack of specialized manpower such as plumbers, electricians, carpenters, etc.

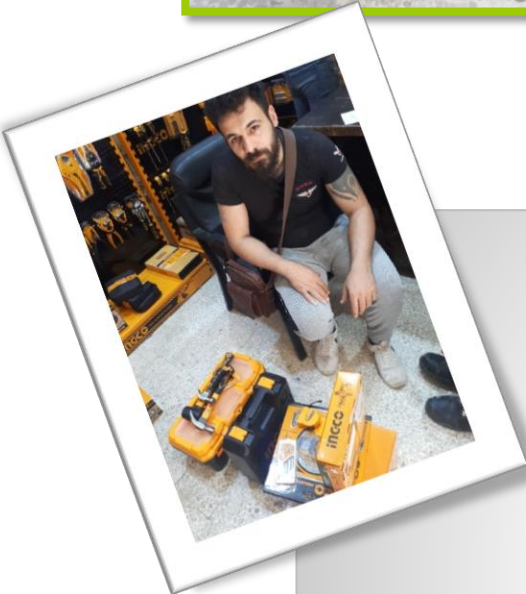
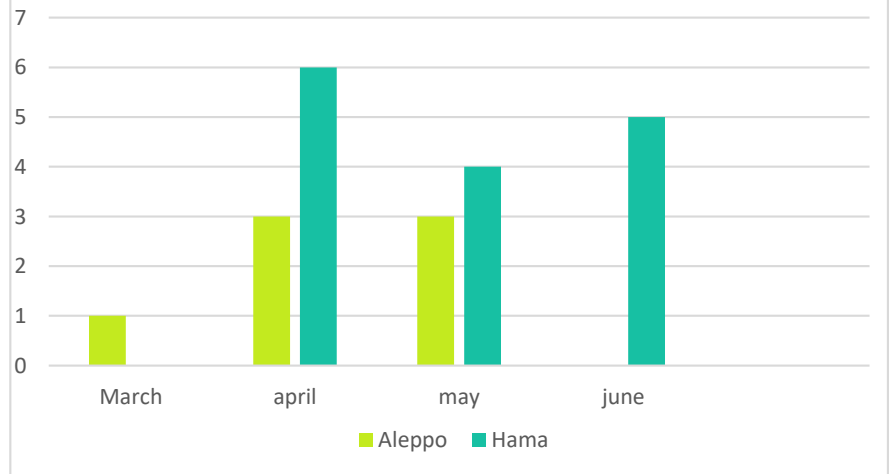
But where can we start?

Many of these tradespersons would like to work, but with the current economic situation in the country, they cannot afford the purchase of equipment and materials.

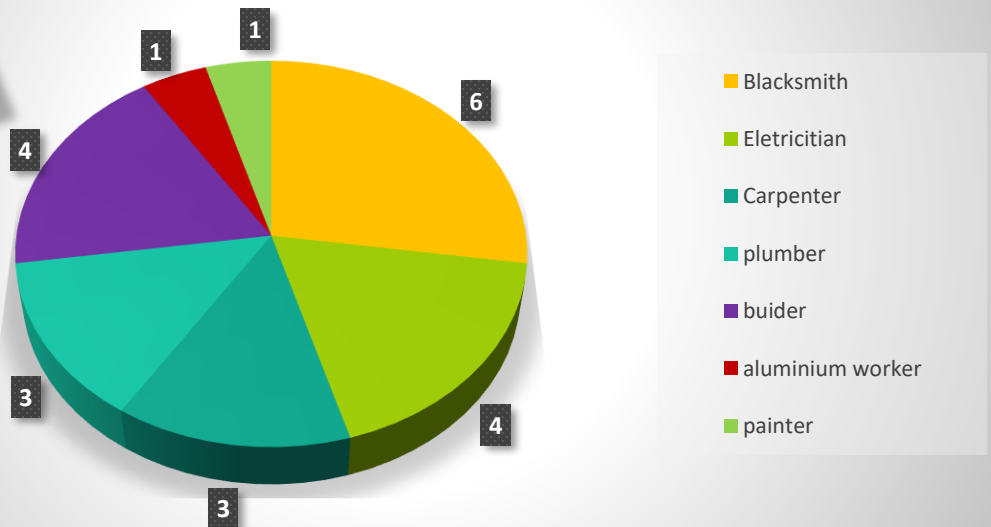
RISE PROGRAMME responded to these needs by providing a “Working Kit of appliances” for these professionals, to allow them to collaborate in the reconstruction and renovation of the houses.



### EMPOWERING CRAFTSMANS (Number of Beneficiaries per month)



### KIT TOOLS BY TYPE OF SPECIALIZATION (quantity)





***RISE PROGRAM*** in its first six months of activities, from 01 March to 31 August has been able to assist people affected by the earthquake disaster in the most diverse fields: basic needs aid, reconstruction, and psychological support.

**Beneficiaries:** according to the three main kinds of aid and separated according to the 14 products offered.

**Period:** from 01/03/2023 to 31/8/2023

Basic needs aid				Housing relief service			Psychological support
Activity	Individuals	families	Activity	Families	Individuals	Individuals	
Basic Needs	2694		Houses Habitability Inspection	58		Caregivers Services 20	
Cash Assistance		405	foundations reinforcement	6			
Medical Assistance	64		Home Restoration	18			
Empowering workplaces		9	rent allowance	8			
			Empowering craftsmen		22		
Total direct beneficiaries		2758 individuals	414 families		90 families	22 individuals	20 individuals
Total indirect beneficiaries <sup>1</sup>			1776 individuals		386 individuals		

Grand total number of families	504
Total number of individuals	4954

<sup>1</sup> Average of 4.29 individuals per family.